

BEAMUP



DH200-L

Projector Ceiling Mount

INSTALLATION GUIDE

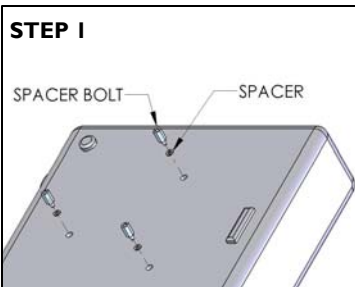
The DH200L ceiling mount is for mounting inverted LCD/DLP projectors into a ceiling.

DH200L Mount are constructed of high strength aluminum, anodized to prevent from scratching and are designed for quick and easy installation. The ball joint provides the greatest range of Yaw, Pitch & Roll.

WARNING: Improper installation can result in serious injury! Make sure that the ceiling can support five times the total weight of the equipment. If you find the ceiling can not support this weight, reinforce the ceiling before installing the mount.

INSTALLATION SHOULD BE DONE BY A QUALIFIED TECHNICIAN.

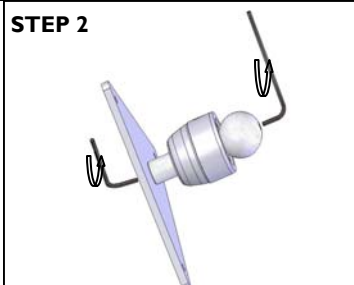
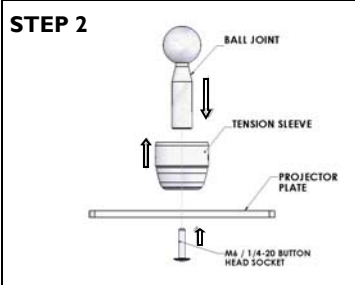
WE ARE NOT RESPONSIBLE FOR IMPROPER INSTALLATIONS.



Before mounting the projector to the ceiling, find the appropriate distance from the screen play to achieve the best picture.

Step 1 :

Place projector on a table on a flat sturdy area. Flip projector over, locate the mounting holes and attach the spacer bolts provided. **DO NOT OVERTIGHTEN !**

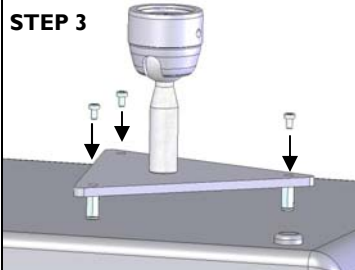


Step 2 :

With the hex wrench provided attach the projector plate, tension sleeve and the ball joint, using the M6(1/4-20) button head socket. **MAKE SURE THE BALL JOINT SLIDES INTO THE TENSION SLEEVE BEFORE TIGHTENING THE SOCKET.**

Step 3 :

Attach the projector plate to the spacer bolts on the projector using the button head sockets included.

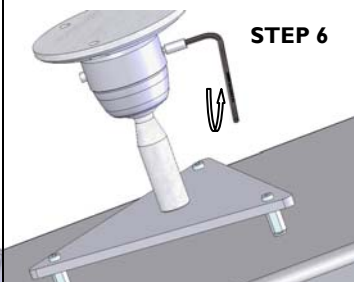


Step 4 :

After finding the appropriate place on the ceiling attach the Base using the anchors and bolts provided.

Step 5 :

Carefully pick up the projector with the projector plate attached and screw it into the Base clockwise. **THE TENSION SLEEVE WILL STILL FEEL LOOSE, IT WILL BE TIGHTENED IN THE NEXT STEP.**



Step 6 :

Insert the set screw (M6 x 1) into the hole on the tension sleeve and after finding the appropriate angle for your projector tighten the screw into place and you are finished.

www.beamupusa.com / www.beam-up-GmbH.de

MOUNT BASSE

BALL JOINT

TENSION SLEEVE



ANCHORS



SPACER



BUTTON HEAD SOCKET



M6 BUTTON HEAD SOCKET

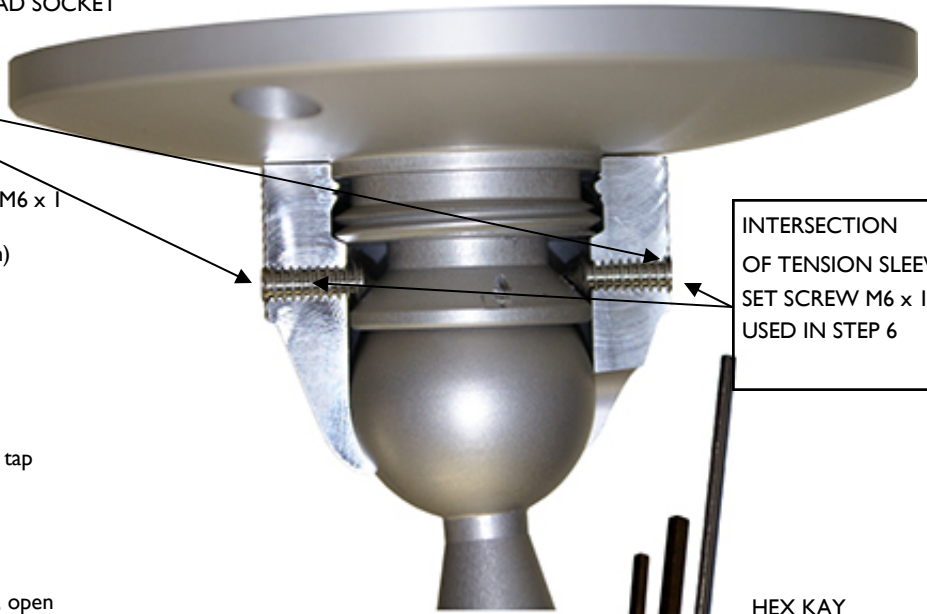


SET SCREW M6 x 1

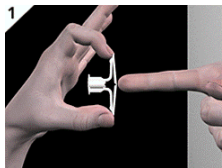
PHILIPS SCREWS



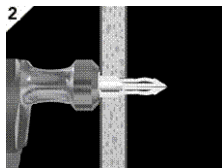
OPTIONAL:
2 & 4 INCH
EXTENSION



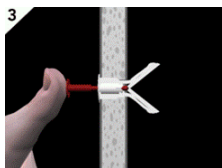
INTERSECTION
OF TENSION SLEEVE
SET SCREW M6 x 1
USED IN STEP 6



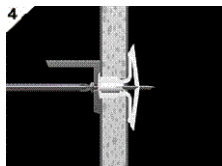
1 Drill 5/16 diameter (8mm) hole.
Fold anchor in middle.



2 Insert anchor in hole and tap flash with wall.



3 Insert key to pop anchor, open & lock behind hollow wall.
(Not necessary for thick or solid wall)
Do not force or hammer key.



4 Place item over anchor.
Insert screw and tighten until screw is flush with fixture.



SPACER BOLTS



HEX KEY